



Pressure gauges - Art. mge - stainless steel case (glycerine) - BOTTOM Dial 40 -
50 - 63 - 80 mm

MGE.R



Use

Pressure gauges suitable for all process gaseous and liquid that don't attack copper alloy parts. Intended for adverse service conditions where pulsating or vibration exists. Hydraulics, Compressors

Description

Pressure gauge made according UNI EN 837.1 norms

- Stainless steel case aisi 304 dial - Dial 40 - 50 - 63 mm. protection degree IP65
- BRASS Spring, movement and pivot
- BOTTOM execution
- conical (UNI EN 10226) connection on dial 40 - cilindric (ISO 228) connection on dial 50 and 63
- Aluminium index, Aluminium dial White background
- Black BAR scale and Red PSI (except compound gauge)
- Accuracy 2,5% on dial 40 and 50 - Accuracy 1,6% on dial 63

Using range

Working Temperature: -10 +60° C (+14 +140° F)

Working Pressure: Steady 75% - Variable 60%

Overpressure: 25% < 60 bar >15% (according EN837.1)

Models

Normalized range: Vacuum -1 / 0 Bar+CmHg;

Compound -1+0,6; -1+1,5; -1+3; -1+5; -1+9; -1+15 BAR only;

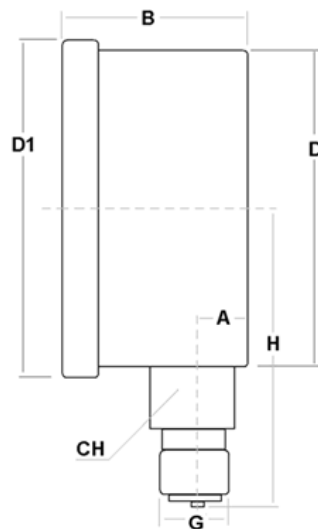
0,6; 1; 1,6; 2,5; 4; 6; 10; 12; 16; 25; 40; 60; 100; 160; 250; 315; 400; 600; 1000 Bar + Psi

Options

NPT ANSI B.1.20.1 thread, With or without Glycerin, OXYGEN SERVICE, customize range, scale or logo; Coloured sector; Bottom connection @ 3 / 9 / 12 hours; refrigerants range with UNF connection



Available sizes



VAR	A	B	D	D1	H	G	CH	Kg	Lotto
dn 40	0,5	25	40,5	44	38	1/8" BSPT	11	0,110	100
dn 50	10	30	52	57	49	1/4" BSPP	14	0,145	100
dn 63	10	30	62	68	57	1/4" BSPP	14	0,207	50
dn 80	10	30	80	87	72	3/8" BSPP	17	0,290	50

Picture, dimensions and features could change at any time



Pressure gauges - Art. mge - stainless steel case (glycerine) - BOTTOM Dial 80 -
100 - 150 mm

MGE.R



Use

Pressure gauges suitable for all process gaseous and liquid that don't attack copper alloy parts. Intended for adverse service conditions where pulsating or vibration exists. Hydraulics, Compressors

Description

Pressure gauge made according UNI EN 837.1 norms

- Stainless steel case aisi 304 dial IP65 - Dial 80 - 100 - 150 mm.
- aisi 304 bayonet ring
- Polycarbonated windows
- BRASS movement and pivot, BOTTOM execution
- cilindrical (ISO 228) connection with restrictor
- Aluminium index
- Aluminium dial White background
- Black BAR scale and Red PSI one (except compoud gauge BAR only)
- Accuracy 1,0% (1,6% on dial 80 mm)

Using range

Working Temperature: -10 +60° C (+14 +140° F)

Working Pressure: Steady 75% - Variable 60% - Overpressure 25% < 60 bar >15% (according EN 837.1)



Models

Normalized range: Vacuum -1 / 0 Bar+CmHg;

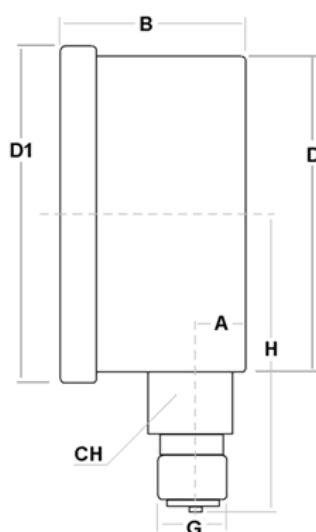
Compound -1+0,6; -1+1,5; -1+3; -1+5; -1+9; -1+15 BAR only;

0.6; 1; 1,6; 2,5; 4; 6; 10; 16; 25; 40; 60; 100; 160; 250; 400; 600; 1000 Bar + Psi

Options

NPT ANSI B.120.1 thread, With or without Glycerin, OXYGEN SERVICE, customize range, scale or logo; Coloured sector; Bottom connection @ 3 / 9 / 12 hours

Available sizes



VAR	A	B	D	D1	H	G	CH	Kg	Lotto
dn 80	10	38	79	88	69	1/4" BSPP	14	0,450	50
dn 100	10	38	98,5	110	82	1/2" BSPP	22	0,645	20
dn 150	18	54	149	160	110	1/2" BSPP	22	0,845	10

Picture, dimensions and features could change at any time



Pressure gauges - Art. mge - stainless steel case (glycerine) - BOTTOM + WALL

MGE.B

FLANGE Dial 40 - 50 - 63 mm



Use

Pressure gauges suitable for all process gaseous and liquid that don't attack copper alloy parts. Intended for adverse service conditions where pulsating or vibration exists. Hydraulics, Compressors

Description

Pressure gauge made according UNI EN 837.1 norms

- Stainless steel case aisi 304 dial - Dial 40 - 50 - 63 mm. protection degree IP65
- BRASS Spring, movement and pivot
- BOTTOM execution + WALL FLANGE
- conical (UNI EN 10226) connection on dial 40 - cylindrical (ISO 228) connection on dial 50 and 63
- Aluminium index, Aluminium dial White background
- Black BAR scale and Red PSI (except compound gauge)
- Accuracy 2,5% on dial 40 and 50 - Accuracy 1,6% on dial 63

Using range

Working Temperature: -10 +60° C (+14 +140° F)

Working Pressure: Steady 75% - Variable 60%

Overpressure: 25% < 60 bar >15% (according EN837.1)

Models

Normalized range: Vacuum -1 / 0 Bar+CmHg;

Compound -1+0,6; -1+1,5; -1+3; -1+5; -1+9; -1+15 BAR only;

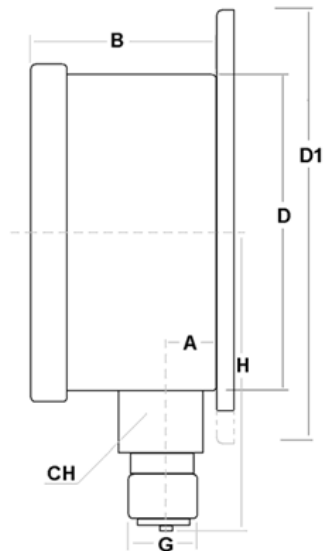
0.6; 1; 1,6; 2,5; 4; 6; 10; 16; 25; 40; 60; 100; 160; 250; 315; 400; 600; 1000 Bar + Psi

Options

NPT ANSI B.1.20.1 thread, With or without Glycerin, OXYGEN SERVICE, customize range, scale or logo; Coloured sector; refrigerants range with UNF connection



Available sizes



VAR	A	B	D	D1	H	G	CH	Kg	Lotto
dn 63	10	29	62	83	53	1/4" BSPP	14	0,188	50
dn 80	10	30	80	108	72	3/8" BSPP	17	0,330	50

Picture, dimensions and features could change at any time



Pressure gauges - Art. mge - stainless steel case (glycerine) - BOTTOM + WALL

MGE.B

FLANGE Dial 80 - 100 - 150 mm



Use

Pressure gauges suitable for all process gaseous and liquid that don't attack copper alloy parts. Intended for adverse service conditions where pulsating or vibration exists. Hydraulics, Compressors

Description

Pressure gauge made according UNI EN 837.1 norms

- Stainless steel case aisi 304 dial IP65 - Dial 80 - 100 - 150 mm.
- aisi 304 bayonet ring
- Polycarbonated windows
- BRASS movement and pivot, BOTTOM execution with FLANGE for WALL mounting
- cilindric (ISO 228) connection with restrictor
- Aluminium index
- Aluminium dial White background
- Black BAR scale and Red PSI one (except compound gauge BAR only)
- Accuracy 1,0% (1,6% on dial 80 mm)

Using range

Working Temperature: -10 +60° C (+14 +140° F)

Working Pressure: Steady 75% - Variable 60% - Overpressure 25% < 60 bar >15% (according EN 837.1)

Models

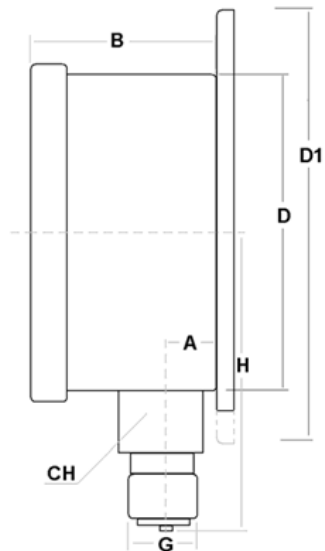
Normalized range: Vacuum -1 / 0 Bar+CmHg; Compound -1+0,6; -1+1,5; -1+3; -1+5; -1+9; -1+15 BAR only; 0,6; 1; 1,6; 2,5; 4; 6; 10; 16; 25; 40; 60; 100; 160; 250; 315; 400; 600; 1000 Bar + Psi

Options

NPT ANSI B.1.20.1 thread, With or without Glycerin, OXYGEN SERVICE, customize range, scale or logo; Coloured sector; electric switch



Available sizes



VAR	A	B	D	D1	H	G	CH	Kg	Lotto
dn 100	10	38	98,5	128	82	1/2" BSPP	22	0,790	20

Picture, dimensions and features could change at any time



Pressure gauges - Art. mge - stainless steel case (glycerine) - FLANGED Dial 40 -
50 - 63 - 80 mm

MGE.F



Use

Pressure gauges suitable for all process gaseous and liquid that don't attack copper alloy parts. Intended for adverse service conditions where pulsating or vibration exists. Hydraulics, Compressors

Description

Pressure gauge made according UNI EN 837.1 norms

- Stainless steel case aisi 304 dial - Dial 40 - 50 - 63 mm. protection degree IP65
- BRASS Spring, movement and pivot
- BACK execution + panel FLANGE
- conical (UNI EN 10226) connection on dial 40 - cylindrical (ISO 228) connection on dial 50 and 63
- Aluminium index, Aluminium dial White background
- Black BAR scale and Red PSI (except compound gauge)
- Accuracy 2,5% on dial 40 and 50 - Accuracy 1,6% on dial 63

Using range

Working Temperature: -10 +60° C (+14 +140° F)

Working Pressure: Steady 75% - Variable 60% - Overpressure: 25% < 60 bar >15% (according EN837.1)

Models

Normalized range: Vacuum -1 / 0 Bar+CmHg;

Compound -1+0,6; -1+1,5; -1+3; -1+5; -1+9; -1+15 BAR only;

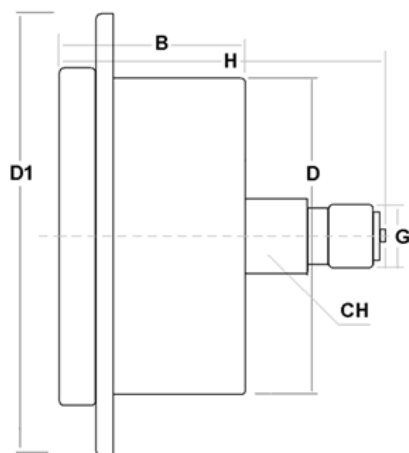
0.6; 1; 1,6; 2,5; 4; 6; 10; 16; 25; 40; 60; 100; 160; 250; 315; 400; 600; 1000 Bar + Psi

Options

NPT ANSI B.1.20.1 thread, With or without Glycerin, OXYGEN SERVICE, customize range, scale or logo; Coloured sector; refrigerants range with UNF connection



Available sizes



VAR	B	D	D1	H	G	CH	Kg	Lotto
dn 40	25	40,5	61	43	1/8" BSPT	11	0,110	100
dn 50	28	51	72	50	1/4" BSPP	14	0,145	100
dn 63	29	62	83	53	1/4" BSPP	14	0,188	50
dn 80	30	80	87	66	3/8" BSPP	17	0,275	50

Picture, dimensions and features could change at any time



Pressure gauges - Art. mge - stainless steel case (glycerine) - FLANGED Dial 80 -
100 - 150 mm

MGE.F



Use

Pressure gauges suitable for all process gaseous and liquid that don't attack copper alloy parts. Intended for adverse service conditions where pulsating or vibration exists. Hydraulics, Compressors

Description

Pressure gauge made according UNI EN 837.1 norms

- Stainless steel case aisi 304 dial IP65 - Dial 80 - 100 - 150 mm.
- aisi 304 bayonet ring
- Polycarbonated windows
- BRASS movement and pivot, eccentric BACK execution with FLANGE for panel campling
- cylindrical (ISO 228) connection with restrictor
- Aluminium index
- Aluminium dial White background
- Black BAR scale and Red PSI one (except compoud gauge BAR only)
- Accuracy 1,0% (1,6% on dial 80 mm)

Using range

Working Temperature: -10 +60° C (+14 +140° F)

Working Pressure: Steady 75% - Variable 60% - Overpressure 25% < 60 bar >15% (according EN 837.1)

Models

Normalized range: Vacuum -1 / 0 Bar+CmHg;

Compound -1+0,6; -1+1,5; -1+3; -1+5; -1+9; -1+15 BAR only;

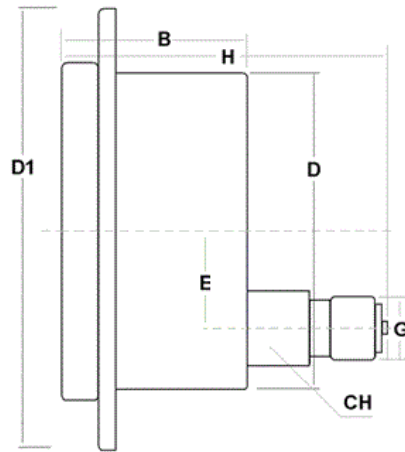
0.6; 1; 1,6; 2,5; 4; 6; 10; 16; 25; 40; 60; 100; 160; 250; 400; 600; 1000 Bar + Psi

Options

NPT ANSI B.1.20.1 thread, With or without Glycerin, OXYGEN SERVICE, customize range, scale or logo; Coloured sector; electric switch



Available sizes



VAR	B	D	D1	E	H	G	CH	Kg	Lotto
dn 80	38	75	105	--	69	1/4" BSPP	14	0,450	50
dn 100	39	98,5	128	18,3	82	1/2" BSPP	22	0,790	20
dn 150	48	149	175	25,5	92	1/2" BSPP	22	0,875	10

Picture, dimensions and features could change at any time



Pressure gauges - Art. mge - stainless steel case (glycerine) - BACK Dial 40 - 50 -
63 - 80 mm

MGE.P



Use

Pressure gauges suitable for all process gaseous and liquid that don't attack copper alloy parts. Intended for adverse service conditions where pulsating or vibration exists. Hydraulics, Compressors

Description

Pressure gauge made according UNI EN 837.1 norms

- Stainless steel case aisi 304 dial - Dial 40 - 50 - 63 mm. protection degree IP65
- BRASS Spring, movement and pivot
- BACK execution
- conical (UNI EN 10226) connection on dial 40 - cylindrical (ISO 228) connection on dial 50 and 63
- Aluminium index, Aluminium dial White background
- Black BAR scale and Red PSI (except compound gauge)
- Accuracy 2,5% on dial 40 and 50 - Accuracy 1,6% on dial 63

Using range

Working Temperature: -10 +60° C (+14 +140° F)

Working Pressure: Steady 75% - Variable 60% - Overpressure: 25% < 60 bar >15% (according EN837.1)

Models

Normalized range: Vacuum -1 / 0 Bar+CmHg;

Compound -1+0,6; -1+1,5; -1+3; -1+5; -1+9; -1+15 BAR only;

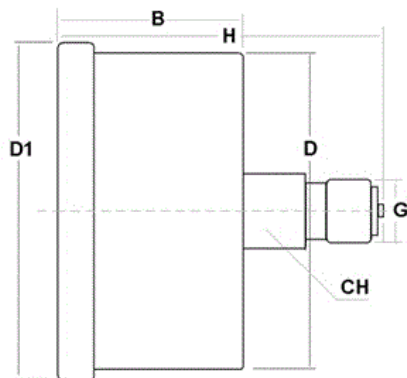
0,6; 1; 1,6; 2,5; 4; 6; 10; 12; 16; 25; 40; 60; 100; 160; 250; 315; 400; 600; 1000 Bar + Psi

Options

NPT ANSI B.1.20.1 thread, With or without Glycerin, OXYGEN SERVICE, customize range, scale or logo; Coloured sector; refrigerants range with UNF connection



Available sizes



VAR	B	D	D1	H	G	CH	Kg	Lotto
dn 40	25	40,5	44	43	1/8" BSPT	11	0,110	100
dn 50	28	51,7	56	50	1/4" BSPP	14	0,145	100
dn 63	29	62	68	53	1/4" BSPP	14	0,188	50
dn 80	33	80	87	66	3/8" BSPP	17	0,275	50

Picture, dimensions and features could change at any time



Pressure gauges - Art. mge - stainless steel case (glycerine) - BACK Dial 80 - 100 -
150 mm

MGE.P



Use

Pressure gauges suitable for all process gaseous and liquid that don't attack copper alloy parts. Intended for adverse service conditions where pulsating or vibration exists. Hydraulics, Compressors

Description

Pressure gauge made according UNI EN 837.1 norms

- Stainless steel case aisi 304 dial IP65 - Dial 80 - 100 - 150 mm.
- aisi 304 bayonet ring
- Polycarbonated windows
- BRASS movement and pivot, eccentric BACK execution
- cylindrical (ISO 228) connection with restrictor
- Aluminium index
- Aluminium dial White background
- Black BAR scale and Red PSI one (except compound gauge BAR only)
- Accuracy 1,0% (1,6% on dial 80 mm)

Using range

Working Temperature: -10 +60° C (+14 +140° F)

Working Pressure: Steady 75% - Variable 60% - Overpressure 25% < 60 bar >15% (according EN 837.1)

Models

Normalized range: Vacuum -1 / 0 Bar+CmHg;

Compound -1+0,6; -1+1,5; -1+3; -1+5; -1+9; -1+15 BAR only;

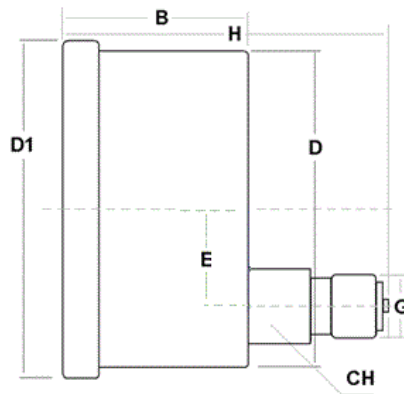
0.6; 1; 1,6; 2,5; 4; 6; 10; 16; 25; 40; 60; 100; 160; 250; 400; 600; 1000 Bar + Psi

Options

NPT ANSI B.1.20.1 thread, With or without Glycerin, OXYGEN SERVICE, customize range, scale or logo; Coloured sector; electric switch



Available sizes



VAR	B	D	D1	E	H	G	CH	Kg	Lotto
dn 80	38	75	84	--	69	1/4" BSPP	14	0,450	50
dn 100	39	98,5	110	18,2	82	1/2" BSPP	22	0,750	20
dn 150	48	149	160	25,5	92	1/2" BSPP	22	0,875	10

Picture, dimensions and features could change at any time



Pressure gauges - Art. mge - stainless steel case (glycerine) - U-CLAMP Dial 40 -
50 - 63 - 80 mm

MGE.S



Use

Pressure gauges suitable for all process gaseous and liquid that don't attack copper alloy parts. Intended for adverse service conditions where pulsating or vibration exists. Hydraulics, Compressors

Description

Pressure gauge made according UNI EN 837.1 norms

- Stainless steel case aisi 304 dial - Dial 40 - 50 - 63 mm. protection degree IP65
- BRASS Spring, movement and pivot
- BACK execution + panel U-CLAMP
- conical (UNI EN 10226) connection on dial 40 - cylindrical (ISO 228) connection on dial 50 and 63
- Aluminium index, Aluminium dial White background
- Black BAR scale and Red PSI (except compound gauge)
- Accuracy 2,5% on dial 40 and 50 - Accuracy 1,6% on dial 63

Using range

Working Temperature: -10 +60° C (+14 +140° F)

Working Pressure: Steady 75% - Variable 60% - Overpressure: 25% < 60 bar >15% (according EN837.1)

Models

Normalized range: Vacuum -1 / 0 Bar+CmHg;

Compound -1+0,6; -1+1,5; -1+3; -1+5; -1+9; -1+15 BAR only;

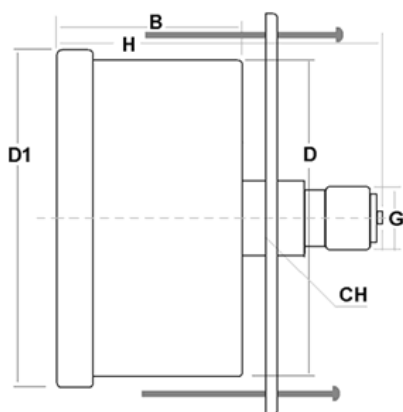
0.6; 1; 1,6; 2,5; 4; 6; 10; 16; 25; 40; 60; 100; 160; 250; 315; 400; 600; 1000 Bar + Psi

Options

NPT ANSI B.1.20.1 thread, With or without Glycerin, OXYGEN SERVICE, customize range, scale or logo; Coloured sector; refrigerants range with UNF connection



Available sizes



VAR	B	D	D1	H	G	CH	Kg	Lotto
dn 40	25	40,5	44	43	1/8" BSPT	11	0,110	100
dn 50	28	51	56	50	1/4" BSPP	14	0,145	100
dn 63	29	62	68	53	1/4" BSPP	14	0,188	50
dn 80	30	80	87	66	3/8" BSPP	17	0,275	50

Picture, dimensions and features could change at any time



Pressure gauges - Art. mge - stainless steel case (glycerine) - U-CLAMP Dial 80 -
100 - 150 mm

MGE.S



Use

Pressure gauges suitable for all process gaseous and liquid that don't attack copper alloy parts. Intended for adverse service conditions where pulsating or vibration exists. Hydraulics, Compressors

Description

Pressure gauge made according UNI EN 837.1 norms

- Stainless steel case aisi 304 dial IP65 - Dial 80 - 100 - 150 mm.
- aisi 304 bayonet ring
- Polycarbonated windows
- BRASS movement and pivot, eccentric BACK execution with U-CLAMP for panel campling
- cilindrical (ISO 228) connection with restrictor
- Aluminium index
- Aluminium dial White background
- Black BAR scale and Red PSI one (except compoud gauge BAR only)
- Accuracy 1,0% (1,6% on dial 80 mm)
- Iron steel clamp zinc plated. Sell a part with code S100.MRE

Using range

Working Temperature: -10 +60° C (+14 +140° F)

Working Pressure: Steady 75% - Variable 60% - Overpressure 25% < 60 bar >15% (according EN 837.1)

Models

Normalized range: Vacuum -1 / 0 Bar+CmHg;

Compound -1+0,6; -1+1,5; -1+3; -1+5; -1+9; -1+15 BAR only;

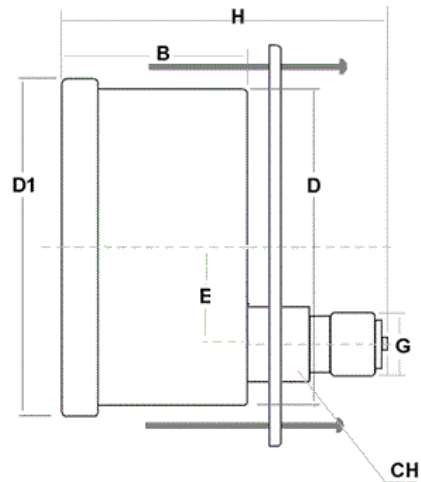
0.6; 1; 1,6; 2,5; 4; 6; 10; 16; 25; 40; 60; 100; 160; 250; 400; 600; 1000 Bar + Psi

Options

NPT ANSI B.1.20.1 thread, With or without Glycerin, OXYGEN SERVICE, customize range, scale or logo; Coloured sector; electric switch



Available sizes



VAR	B	D	D1	E	H	G	CH	Kg	Lotto
dn 80	38	75	84	--	69	1/4" BSPP	14	0,450	50
dn 100	39	98,5	110	18,2	82	1/2" BSPP	22	0,750	20
dn 150	48	149	160	25,5	92	1/2" BSPP	22	0,875	10

Picture, dimensions and features could change at any time